

New Presentation and Information

Updated 1st December 2020

WBA Senior Domestic Competition Changes

Autumn Season 2021



Welcome Back !



- WBA is excited to be reopening the Waverley Basketball Stadium and preparing for competitions to resume in 2021.
- Senior Team Entries for the upcoming Autumn 2021 season are now open.
- 2021 Playing Dates for AUTUMN and SPRING are now online.
- The Waverley Basketball website has been updated with many new resources and documents pertaining to the 2021 season. Please review the **Senior Documents** page carefully. This presentation is a summary and easy guide to information now published under the 'Senior Domestic' drop down menu at www.waverleybasketball.com

Important Calendar Dates



1 st December	<ul style="list-style-type: none">• Senior Team Entry Registration Opens• Junior Clubs will also be invited to open their senior registrations through PlayHQ
December 14 – 23	<ul style="list-style-type: none">• Waverley Stadium available for hire (\$50 p/hour off-peak, \$60 peak times)• Bio-Safety Officers (Covid Marshalls) will be present during all sessions
<i>December 24 – 28</i> <i>January 1 – 3</i>	<ul style="list-style-type: none">• <i>Christmas Closure</i>• <i>New Year Closure</i>
January 4	<ul style="list-style-type: none">• Senior Team Entries Close
January 4 – 15	<ul style="list-style-type: none">• Waverley Stadium available for hire (\$50 p/hour off-peak, \$60 peak times)
January 10 – 14	<ul style="list-style-type: none">• Senior Training/Practice Available
January 17	<ul style="list-style-type: none">• Senior Domestic Weekly Competition Resumes (AUTUMN SEASON January – June)

Senior Season Information



- The new AUTUMN 2021 season will commence on Sunday 17th January and continue to the school holidays in June.
- [CLICK HERE](#) for Autumn playing dates
- Team Representatives must register to the WBA Spring season via the PlayHQ portal
- Representatives, please [CLICK HERE](#) to register your team by **January 4th**
- Individual player registration to Basketball Victoria will continue as normal
 - After entering a team, Representatives will have a unique team code to send to their players
 - Players must register using this unique team link by **January 11th**

Please note players who previously made the 12-month annual PlayHQ registration will have any time lost during basketballs closure added on to recommence when the competition season begins

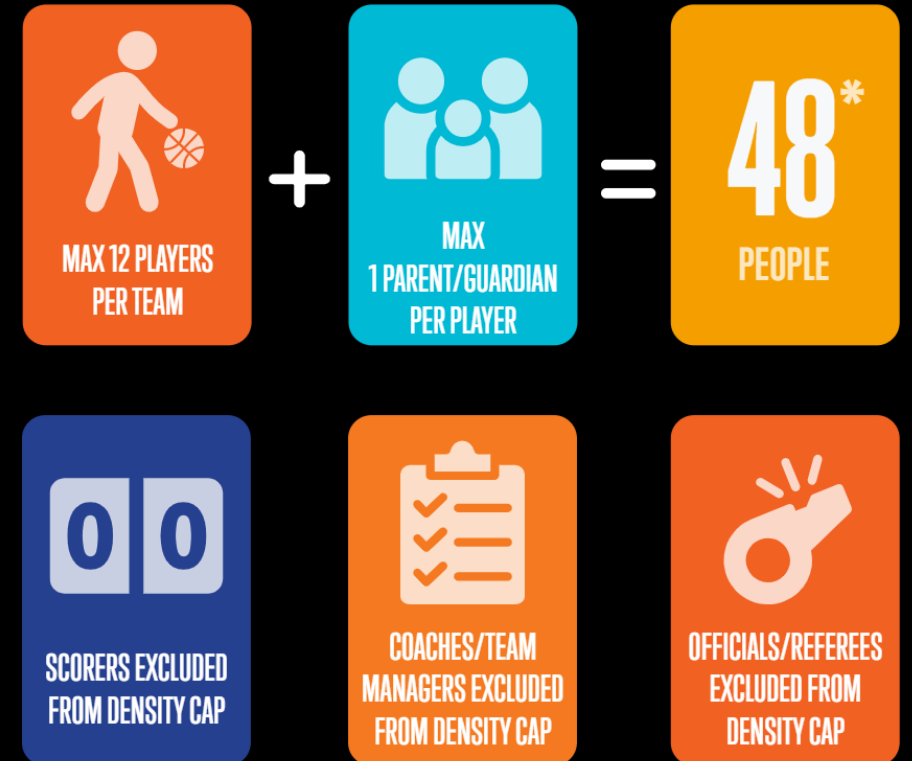
BV Return to Sport Guidelines

<http://basketballvictoria.com.au/covid-19/>

- WBA is carefully adhering to all recommendations and requirements by our governing body Basketball Victoria.
- Capacity limits, spaces, and venues may change between now and the season commencing, and you can stay up to date on the [Basketball Victoria website](#)
- Clarification of any density limits will be emailed to representatives prior to game commencing, however it's unlikely to effect senior competition

PEOPLE PER COURT

ORANGE-50 (MAXIMUM 50)



*Subject to venue density limits.

Bio-Safety Officers & New Procedures

- STAY HOME if you are feeling unwell or showing any cold/flu symptoms
- [CLICK HERE for Arrival & Departure Info](#)
- [CLICK HERE for new Entry & Exit Procedures](#)
- No basketballs allowed inside facility for competition
 - Team balls provided for warm up
- Bio-Safety Officers and Officials will ensure equipment, score benches and player benches are cleaned between every game
- Hand sanitizers available in foyers and score benches
 - Players are encouraged to use these before, during, and after playing

PLAYER AND PARENT INFORMATION



PREPARE/DRESS
AT HOME



SHOWER BEFORE AND
AFTER GAMES



WASH OR SANITISE YOUR
HANDS BEFORE AND AFTER
GAMES



ENTER AND EXIT
THE STADIUM WITHIN 10
MINUTES OF YOUR GAME



MAINTAIN SOCIAL
DISTANCING WHERE
POSSIBLE (1.5M)



OBEY VENUE
STAFF/COVID SAFETY
OFFICER



PLEASE STAY AT HOME IF UNWELL

New Playing Conditions



- HOME Teams **must** provide one scorer for their game
 - This is a mandatory playing condition, [please CLICK HERE for details](#)
- QR Code Check Ins
 - Players participating in matches will not be required to sign in with the QR Code, provided they are listed on the scoreboard and details registered with PlayHQ.
 - ALL spectators, scorers and visitors must use the QR Code to check in.
 - BSO's will confidentially check visitor and scorers have checked in for contact tracing purposes. If an individual cannot demonstrate they have checked in the BSO will request they do it again or fill in a paper form with name and contact number.



New Playing Conditions



- The WBA Canteen will be closed from Monday to Thursday.
 - Vending machine now sells water and Gatorade in addition to the soft drink cans and will be wiped down regularly by BSO's.
- Water station will remain closed until further notice.
- Uniform hire will also be unavailable until further notice.
- Approved face coverings should be worn by all patrons over the age of 12 years, on arrival and departure from the stadium and at any time when not participating. Referees, coaches or other people in non-exertive roles must wear a face mask unless a lawful exemption applies.
- High Fives and shaking hands banned.
 - Team Representatives please assist making players aware their attitudes and behaviours surrounding these habits need to be modified until further notice.

Mid-Week Scheduling Challenges



- Games will run on 60 minute scheduling, an increase from the usual 45 minutes
- [CLICK HERE for Timing Rules](#)
 - Timing will remain the same, however a 20-minute break will be allocated between all games
- Senior game times have changed dramatically
 - Early start times at 6:20pm (previously 6:30pm)
 - Later final game start time at 10:20pm (previously 10:15pm)
- Oakleigh Recreation Centre will be included as part of Monday Men competition
 - 2a Park Road, Oakleigh. Listed on fixtures as ORC1 (court 1) and ORC 2 (court 2)

Overview of Autumn Schedules



Please click on the nights of the week below to see the overall program

[SUNDAY MIXED AND U'23 MEN](#)

[MONDAY MEN](#)

[TUESDAY WOMEN](#)

[WEDNESDAY MEN](#)

[THURSDAY MEN AND THURSDAY O'35 MEN](#)

Pricing Information



Team Entry

- \$120 per team, payable online through PlayHQ
- Weekly Game Fees \$75.00 per team
- No individual entry fees for spectators and players

EFTPOS and cash facilities will be available

- American Express not accepted
- VISA and MASTERCARD transactions will incur a 1.5% transaction fee
- *Pre-payment options will not be available until Spring season - sorry for any inconvenience*

Walkover Fines

- Notified walkover (24 hours prior to match) \$80.00
- Un-notified walkover \$110.00
- Failure to make payment the following game will result in forfeits
- Two un-notified walkovers consecutively or three in a season will result in team withdrawal

Team Agreement



- All teams must register through the new PlayHQ Autumn Season
 - All Terms & Conditions have changed for the upcoming season due to new policies and procedures, please read carefully.
- **[CLICK HERE to Register Online.](#)**
- All players must register by Monday January 4th
 - Team Representatives will receive a unique team link after registering that they must share with their teammates.
 - This unique team link can be used during the season, if any players join in the future.
- Requests will not be granted
 - Requests for no early or no late game times will not be granted.
 - Teams who cannot accept these changes are not guaranteed a place in the competition.

Conclusion



- Please be aware new rules and regulations may be subject to further changes based on Government advice.
- WBA recognises there are significant changes being made to all competitions and we thank you for your understanding and patience while we work through the changes with our governing body Basketball Victoria.
- **WBA Return to Sport Guide**
 - [CLICK HERE](#) for a quick reference guide on returning to basketball at WBA.
- Keep up to date on the Basketball Victoria website <http://basketballvictoria.com.au/covid-19/>
- And follow WBA online:
 - Website: www.waverleybasketball.com
 - Facebook: Waverley Basketball Association <https://www.facebook.com/Wbabball/>
 - Instagram: @waverleyfalcons <https://www.instagram.com/waverleyfalcons/>